



Tokyo Elegance

Where to Stay in Tokyo



- The Tokyo EDITION, Ginza



- The Peninsula Tokyo, Ginza



- Imperial Hotel Tokyo, Ginza
- Shangri-La Tokyo

Top Attractions in Tokyo

Ginza



Description

Most upscale shopping street

Why Visit

Flagship stores, luxury car showrooms, world's largest Uniqlo

Atmosphere

Polished, refined, prestigious

Shopping :

- GINZA SIX
- Mitsukoshi
- Wako (iconic clock tower)

Top Attractions in Tokyo

Marunouchi Naka-dori



Description

Sophisticated street near Tokyo Station

Why Visit

Cafés, boutiques, Tokyo Station & Imperial Palace walks

Atmosphere

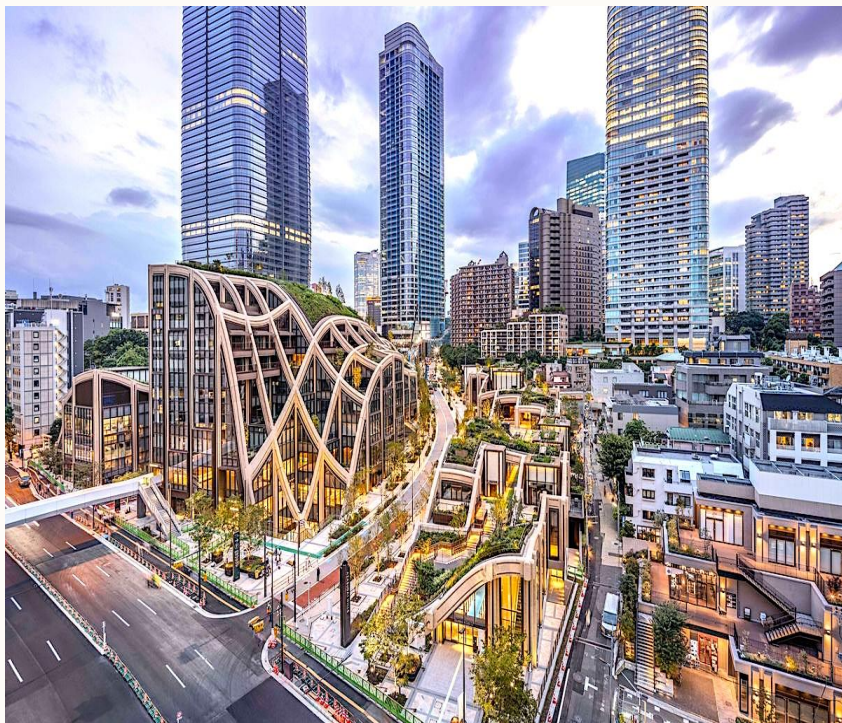
Quiet luxury, beautiful winter illuminations

Shopping :

- Marunouchi Building (Marubiru)
- KITTE (rooftop Tokyo Station view)

Top Attractions in Tokyo

Azabudai



Description

New luxury urban district with architecture and art

Why Visit

High-end dining, galleries, skyline views

Atmosphere

Ultra-modern, refined, international

Shopping :

- Azabudai Hills

Top Attractions in Tokyo

Shibuya Crossing



Description

World's busiest pedestrian crossing, Tokyo's vibrant heart

Why Visit

Iconic human wave, Hachiko Statue, Shibuya Sky

Atmosphere

Neon lights, giant screens, nonstop crowds

Shopping :

- Shibuya Scramble Square
- SHIBUYA 109 (youth fashion)
- Miyashita Park

Top Attractions in Tokyo

Omotesando



Description

Known as the “Champs-Élysées of Tokyo”

Why Visit

Luxury brands, designer architecture, shopping

Atmosphere

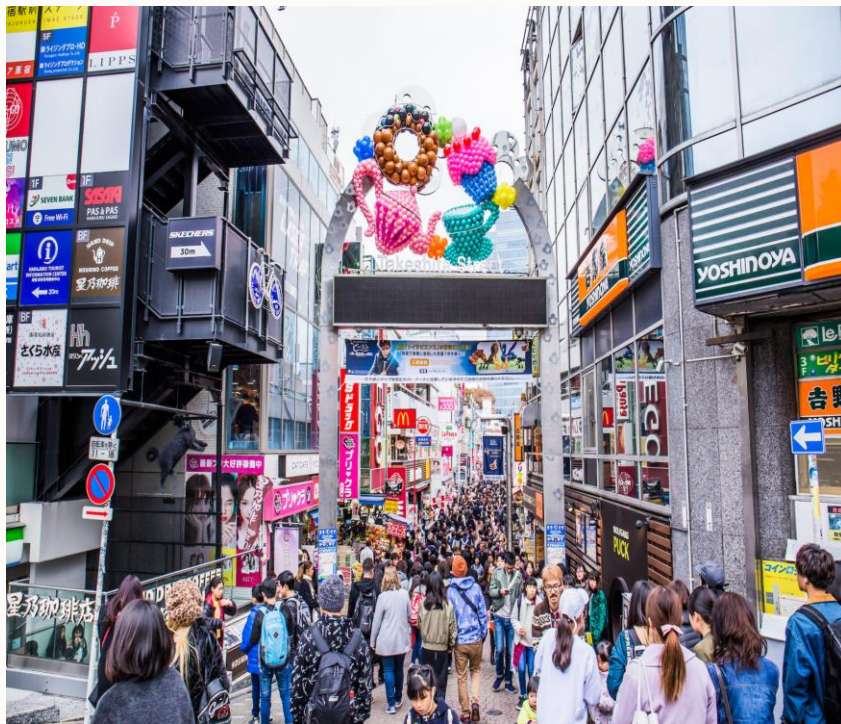
Elegant, calm, tree-lined boulevard

Shopping :

- Omotesando Hills
- Harakado mall
- Gyre
- TAMBURINS Perfume

Top Attractions in Tokyo

Takeshita Street



Description

Center of youth culture and kawaii fashion

Why Visit

Oversized crepes, streetwear, ¥100 shops

Atmosphere

Extremely crowded, colorful, youthful energy

Shopping :

- SoLaDo Takeshita-dori
- Cute Cube Harajuku

Top Attractions in Tokyo

Shinjuku: Golden Gai & Omoide Yokocho



Description

Narrow historic alleys in Shinjuku

Why Visit

Nightlife, yakitori, Godzilla Head nearby

Atmosphere

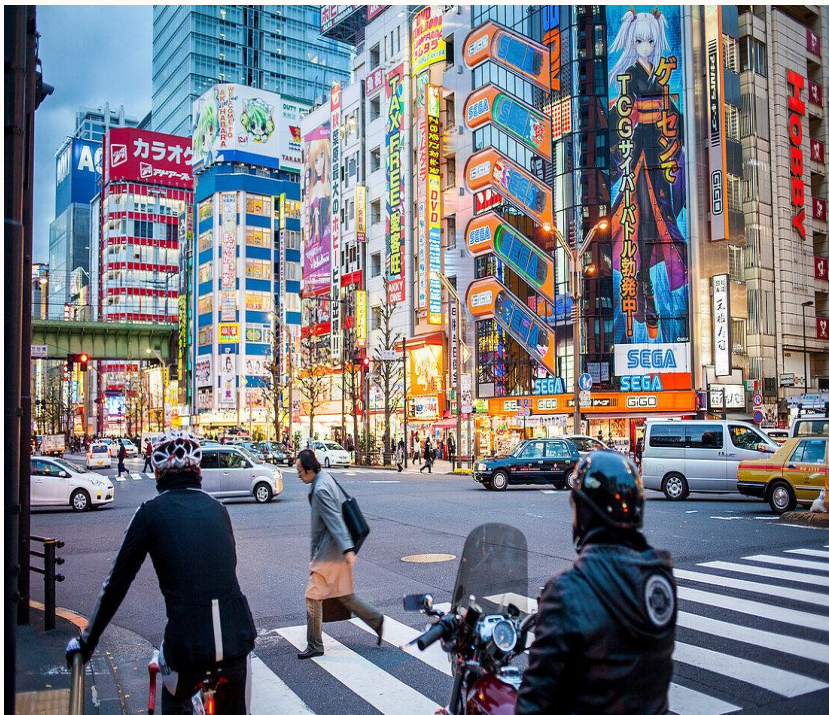
Fast-paced, energetic by day, neon-lit and lively at night

Shopping :

- Isetan Shinjuku
- Lumine Shinjuku
- Dasique Flagship Store

Top Attractions in Tokyo

Akihabara



Description

Capital of anime, gaming, and electronics

Why Visit

Tech megastores and otaku culture

Atmosphere

Loud, LED-filled, futuristic

Shopping :

- Yodobashi-Akiba
- Radio Kaikan
- Akiba Tolim

Top Attractions in Tokyo

Nakamise-dori



Description

Historic street leading to Senso-ji Temple

Why Visit

Traditional souvenirs, mochi, senbei snacks

Atmosphere

Old Edo-style Tokyo charm

Shopping :

- Asakusa ROX

Top Attractions in Tokyo

Diver City Tokyo Plaza



Description

Waterfront shopping and entertainment complex

Why Visit

Gundam statue, casual shopping, sea views

Atmosphere

Relaxed, spacious, family-friendly

Specialty Coffee in Tokyo



- ✿ Mocha Coffee – Shibuya قهوة يمنية
- ✿ BONGEN COFFEE – Ginza
- ✿ KOFFEE MAMEYA – Shibuya
- ✿ BAM BI COFFEE – Shinjuku
- ✿ THE ROASTERY by NOZY COFFEE – Shibuya
- ✿ Blue Bottle Coffee – Shibuya
- ✿ SACYA – Shibuya Scramble Square
- ✿ The Matcha Tokyo – Shibuya Miyashita Park

Brunch & Pancake Cafés in Tokyo



Flipper's Shibuya

Famous for signature soufflé pancakes. Light, fluffy texture toppings and seasonal fruits.



A Happy Pancake Omotesando

Ultra-fluffy soufflé-style pancakes made to order, served with whipped butter and syrup.



BUTTER Hoboku Rakunojo

Farm-fresh Hokkaido dairy café featuring classic Soufflé-style pancakes with premium Biei butter

Café Dining & Dessert Experiences in Tokyo



Kacto

café offering modern American-style
brunch with Japanese sensibility.



Aoyama Flower Market Green House

A botanical oasis café surrounded by fresh
flowers and greenery.

Street Food Experience in Tokyo



Ginza Tsuboyaki-imo

A charming shop specializing in traditional clay-pot roasted sweet potatoes, cooked over an open flame



HOKKAIDO MILK BAR Asakusa

A dairy dessert. Famous for rich, creamy soft-serve ice cream using authentic Hokkaido milk.

Top Pizza in Tokyo

Asia's pizza capital



The Pizza Bar on 38th

Ranked No. 1 in Asia in 2024 and placed 4th worldwide.



PST Higashi Azabu

Awarded the Michelin Bib Gourmand for several consecutive years and listed among the Top 50 pizzas in Asia-Pacific..



Pizza Marumo

Ranked 14th in Asia in 2024 according to the 50 Top Pizza list

Top Pizza in Tokyo

Asia's pizza capital



PIZZA STRADA

Recipient of the Michelin Bib Gourmand for multiple years, consistently recognized as one of Tokyo's best for quality and value.



L'Antica Pizzeria da Michele

An internationally recognized branch adhering to authentic Neapolitan standards



Pizza 4P's Tokyo

The first Japanese location of the popular Vietnam-based artisan pizza chain

Indian Flavors in Tokyo

Please check if the meat is Halal



Ahilya restaurant Azabudai hills

A celebrated Indian restaurant offering authentic North and South Indian cuisine



Bombay sizzlers

A contemporary Ginza-area restaurant renowned for its signature smoking sizzler platters and unique Indo-Chinese fusion dishes with many vegetarian options



Spice Lab Tokyo

A luxury fine-dining destination in Ginza specializing in innovative modern Indian gastronomy, blending seasonal Japanese ingredients with sophisticated spice techniques.

Signature Dining Experience Tokyo



Biryani Osawa

A Michelin-listed restaurant renowned for serving just one premium biryani daily, freshly prepared with either mutton or chicken.



LUXE BURGERS NINGYOCHO

Tokyo's first halal-certified burger bistro, celebrated for healthy, mayonnaise-free lamb and Wagyu patties crafted by French-trained chefs.



Halal Ramen Honolu Premier Asakusa

A popular halal ramen destination known for its rich chicken broth, spicy fried-chicken ramen, and authentic Japanese beef.

Day Trip from Tokyo

Kawaguchiko

About

Is the most popular of the Fuji Five Lakes in Yamanashi, known for its prime location offering the best views of Mount Fuji.

How to Reach

from Shinjuku Station directly to Kawaguchiko Station
Duration: About 1 hour 52 minutes

Things to Do

- Kawaguchiko Music Forest Museum
- Oishi Park
- Mt. Fuji Panoramic Ropeway
- Lake Kawaguchi Maple Corridor
- Gotemba Premium Outlets



Day Trip from Tokyo

Yokohama

About

It was one of the first ports to open to foreign trade in 1859 after centuries of isolation. This made it a charming blend of traditional Japanese culture with Western and Chinese influences.

How to Reach

from Tokyo Station to Yokohama
Duration : About 25–30 minutes

Things to Do

- Minato Mirai 21
- Yokohama Landmark Tower
- Sky Garden Observatory
- Yokohama Red Brick Warehouse
- Yokohama Chinatown
- Yamashita Park



Day Trip from Tokyo

Kawagoe

About

The city is nicknamed (Little Edo) because it has preserved the architecture and atmosphere of Edo-era Tokyo. While most of old Edo disappeared from Tokyo due to wars and earthquakes, Kawagoe remains a living reflection of that period.

How to Reach

From Ikebukuro Station Express trains to Kawagoe

Duration : About 30 minutes

Things to Do

- Kurazukuri
- Kashiya Yokocho
- Toki no Kane
- Taisho Roman Yume-dori
- Starbucks Coffee - Kawagoe



Day Trip from Tokyo

Tokyo Disneyland

About

It blends classic magic with exclusive, high-tech rides, world-class Japanese hospitality, and unique snacks, delivering a meticulously maintained, truly one-of-a-kind experience

How to Reach

By Car or Train

Duration : About 30 minutes

Things to Do

- Ride the top attractions: Beauty and the Beast, Pooh's Hunny Hunt, Monsters, Inc. Ride & Go Seek!
- Watch the night show: Electrical Parade Dream lights
- Explore World Bazaar
- Use the app: book Premier Access or Standby Passes for popular rides



Shopping from Tokyo

Skincare & Beauty



MEGA Don Quijote

Huge discount store with cosmetics, skincare, snacks, and souvenirs



@cosme TOKYO

Best place to discover top-rated Japanese skincare and makeup



Ainz & Tulpe

Mix of Japanese, Korean, and international brands



SKINGARDEN

Trendy beauty store focused on skincare and makeup

Shopping from Tokyo

Perfume Stores



Liberta Perfume Naka-Meguro

- ✿ Libertà Perfume is a Japanese perfume brand focused on “fragrance democratization”
- ✿ blending art and craft with luxurious natural ingredients and a modern sensibility



MY ONLY FRAGRANCE

- ✿ Japanese custom-perfume brand specializing in creating personalized fragrances on the spot
- ✿ The perfume is mixed, bottled, and labeled immediately, usually within 20–30 minutes.

Shopping from Tokyo

Clothing & Fashion Shopping From Japan

The logo for STUDIOUS, featuring the word "STUDIOUS" in a black, serif, all-caps font, centered within a light blue rectangular background.

Studios

Contemporary select shop
featuring Japanese designers

The logo for PUBLIC TOKYO, featuring the words "PUBLIC TOKYO" in a black, sans-serif, all-caps font, centered within a light blue rectangular background.

Public Tokyo

Minimal, high-quality
Japanese fashion

The logo for UNITED TOKYO, featuring the words "UNITED TOKYO" in a black, sans-serif, all-caps font, centered within a light blue rectangular background.

United Tokyo

Modern Japanese design
Made-in-Japan focus

The logo for GU, featuring the letters "GU" in a bold, yellow, sans-serif font, centered within a dark blue rectangular background.

GU

Uniqlo's sister brand
Affordable, everyday clothing

The logo for UNIQLO, featuring the words "UNIQLO" in a white, bold, sans-serif font, centered within a red rectangular background.

UNIQLO

High-quality basics
Generally cheaper in Japan

The logo for MUJI, featuring the word "MUJI" in a white, bold, sans-serif font, centered within a dark red rectangular background.

MUJI

Minimalist and durable designs
Focus on natural materials

Shopping from Tokyo

Style & Outdoor

The logo for Takeo Kikuchi is a circular emblem with a thin pink border. Inside the circle, the words "TAKEO" and "KIKUCHI" are stacked vertically in a bold, black, sans-serif font.

**TAKEO
KIKUCHI**

TAKEO KIKUCHI

- ✿ Timeless smart-casual style
- ✿ Ideal for fans of classic American tailoring

The logo for mont-bell is a circular emblem with a thin pink border. Inside the circle, the words "mont-bell" are written in a blue, lowercase, sans-serif font.

mont-bell

mont-bell

- ✿ Lightweight, durable outdoor wear
- ✿ Japan's equivalent to Patagonia

The logo for BEAMS is a circular emblem with a thin pink border. Inside the circle, the word "BEAMS" is written in an orange, bold, sans-serif font.

BEAMS

BEAMS

- ✿ Curated select shop
- ✿ Unique casual and contemporary designs

Shopping from Tokyo

Affordable Japanese Living



from ¥500+

Hands

Sells stationery,
kitchenware, tools, and
lifestyle items



from ¥300+

3COINS

More premium and
aesthetic alternative to
Daiso



from ¥100+

DAISO JAPAN

Cheapest option
Wide variety of items
unique to Japan



Shopping from Tokyo

Stationery & Art Supplies



Loft

Wide range of stationery,
planners, pens, and gifts
Located in major malls



Sekaido

Large art supply store
Includes pencils, notebooks,
brushes, canvases, frames



Ginza Itoya

12-story with themed floors
dedicated to different types
of premium stationery

Shopping from Tokyo

Pharmacies & Drugstores



Cocokarafine

Wide range of Japanese beauty and health products



Matsumoto Kiyoshi

One of Japan's most famous drugstores

General Travel Tips for Visiting Japan

- The best booking platform is Klook.
- Most restaurants require advance reservations.
- When shopping and processing tax-free purchases, you will be required to present your original passport.
- Most places close around New Year's, typically one day before and one day after.
- Popular attractions can sell out quickly, so booking in advance is highly recommended.
- Cash is still preferred in some places, so always keep some cash with you.
- Visitors must complete an entry form before traveling to Japan